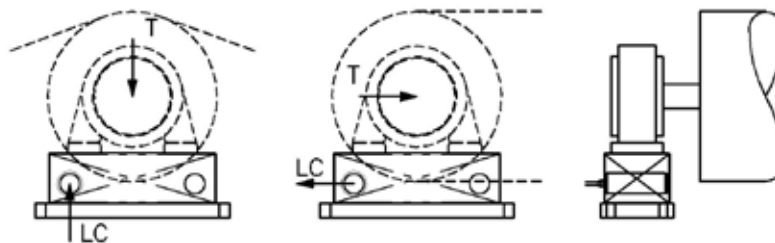
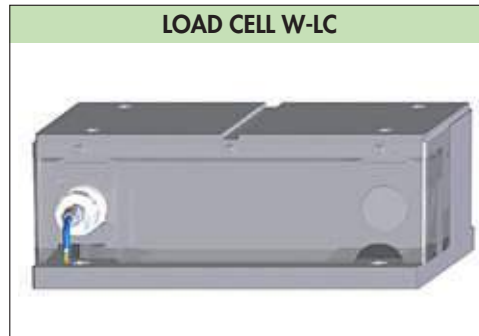


STRETCHING SYSTEMS

LOAD CELL HOUSING W-LC

- ✓ Simple and reliable system.
- ✓ Tailored to application.
- ✓ Installation on any machine position.
- ✓ Stainless Steel or painted mild steel executions.
- Fabric tension evaluation function of load on a fixed roll support (T = resulting tension, LC = measured force).
- The support is designed according to the selected Load Cell.
- Models with Load Cell integrated into the roll support.
- External Stainless Steel cover.
- Dimensions and drilling adaptable to existing roll support.
- Mounting: horizontal, vertical or inclined.
- Typical Load Cell data: accuracy <math><0.5\%</math>, power 10 Vdc, protection IP67, cable 10m.
- Execution
 - E - up to 40 °C, in Stainless Steel.
 - F - up to 130 °C, in Stainless Steel.
- Accessories
 - Load Cell power and transmitter unit.
 - Tension display.
 - Tension regulator and display.
 - Roll support bearing housing.



BEARING SEATS W-S

- ✓ Easy roll removal.
- ✓ Stainless Steel or painted cast iron execution.
- Model W - S -110
 - Cylindrical seat: diameters from 80 to 110 mm.
 - Spherical seat: diameters from 90 to 110 mm.
- Model W-S-160
 - Cylindrical seat: diameters from 110 to 160 mm.
 - Spherical seat: diameters from 120 to 160 mm.
- Model W-S-200
 - Cylindrical seat: diameters from 170 to 200 mm.
 - Spherical seat: diameters from 180 to 200 mm.
- Sizes electro welded are available.

